

FAGUS

Materials

Available Color Combinations



Oak - Natural



Beech - Natural



Beech - Black



Beech - Chocolate

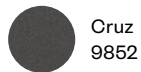


Beech - Gray

01

All Colors Available

All Colors Available



Cruz 9852



Raiden 9410



Avelina 9852



Avelina 7006



Avelina 9220



Avelina 9930



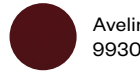
Cruz 9811



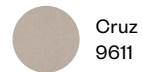
Raiden 9903



Avelina 9190



Avelina 9930



Cruz 9611



Cruz 9107



Raiden 9516



Avelina 9852

02

All Colors Available

All Colors Available



Era CSE 24



Era CSE 44



Patina PAT 35



Era CSE 02



Patina PAT 30



Era CSE 02



Era CSE 03



Patina PAT 11



Patina PAT 16



Patina PAT 37

Available Color Combinations



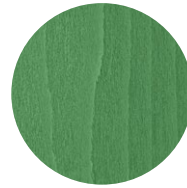
Beech - Light Gray



Beech - Yellow



Beech - Salmon



Beech - Green



Beech - Blue

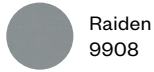
01



Cruz
9611



Cruz
9107



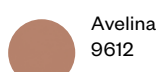
Raiden
9908



Cruz
9612



Cruz
9244



Avelina
9612



Cruz
9516



Raiden
9516



Avelina
9523



Cruz
9392



Cruz
9491



Raiden
9844



Raiden
9908

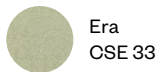


Avelina
9192



Avelina
9392

02



Era
CSE 33



Era
CSE 36



Era
CSE 03



Patina
PAT 11



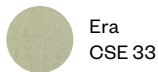
Patina
PAT 16



Patina
PAT 37



Patina
PAT 28



Era
CSE 33



Era
CSE 03



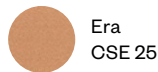
Era
CSE 25



Patina
PAT 16



Patina
PAT 11



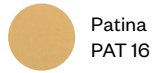
Era
CSE 25



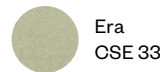
Era
CSE 03



Patina
PAT 09



Patina
PAT 16



Era
CSE 33



Era
CSE 36



Patina
PAT 37



Patina
PAT 28



Era
CSE 36



Era
CSE 20



Era
CSE 12



Patina
PAT 31



Patina
PAT 23

Wood

Natural Wood Options



Beech



Oak

Colored Wood Options



Beech
Black



Beech
Chocolate



Beech
Gray



Beech
Light Gray



Beech
Yellow



Beech
Salmon



Beech
Green

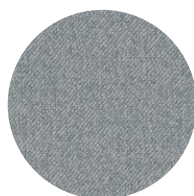


Beech
Blue

Upholstery

Cruz

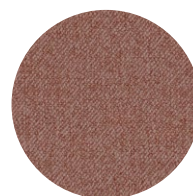
Category	01
Composition	100% PES
Weight	289 g/m ² ±5%
Abrasion Resistance	≥65,000 Martindale
Flammability	BS 5852 - 1 Cigarette
Light Fastness	5 (ISO 105 - B02)
Fastness to Rubbing	Wet: 4 Dry: 5 (ISO 105-X1)



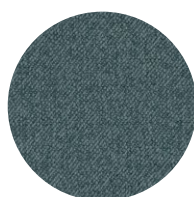
Cruz 9107



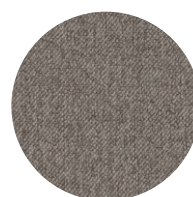
Cruz 9611



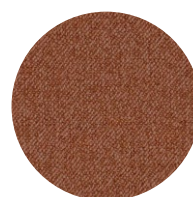
Cruz 9612



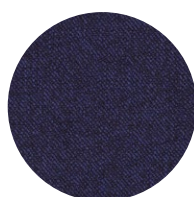
Cruz 9491



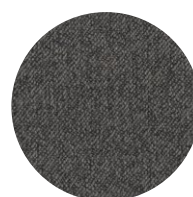
Cruz 9811



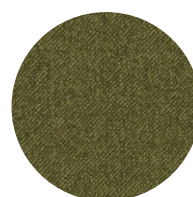
Cruz 9244



Cruz 9392



Cruz 9852



Cruz 9516

Raiden

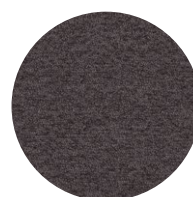
Category	01
Composition	95% PES, 5% PA
Weight	361 g/m ² ±5%
Abrasion Resistance	≥100,000 Martindale
Flammability	BS 5852 - 1 Cigarette FR standards EN ISO 10211+2 and Crib5 available in 2-3 weeks * After treatment in Germany
Light Fastness	4 (ISO 105 - B02)
Fastness to Rubbing	4 (ISO 105 - B02) Dry: 5 (ISO 105-X1)



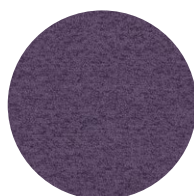
Raiden 9180



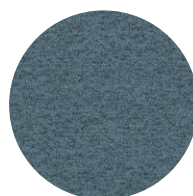
Raiden 9908



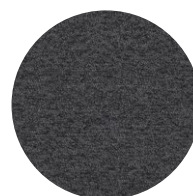
Raiden 9903



Raiden 9371



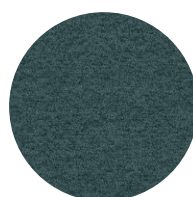
Raiden 9844



Raiden 9410



Raiden 9516



Raiden 9491

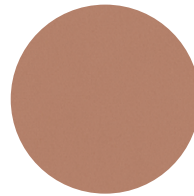


Raiden 9392

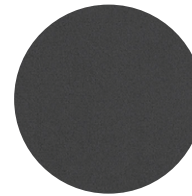
Upholstery

Avelina

Category	01
Composition	100% PES
Weight	477 g/m ² ±5%
Abrasion Resistance	≥100,000 Martindale
Flammability	BS 5852 - 1 Cigarette FR standards EN ISO 10211+2 and Crib5 available in 2-3 weeks * After treatment in Germany
Light Fastness	5 (ISO 105 - B02)
Fastness to Rubbing	Wet: 5 Dry: 4 (ISO 105-X1)



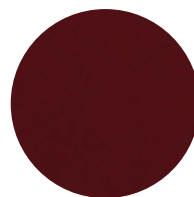
Avelina 9612



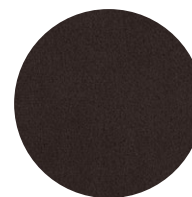
Avelina 9852



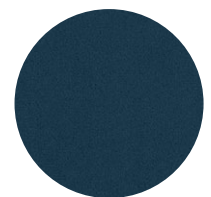
Avelina 9523



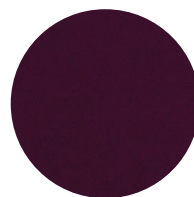
Avelina 9930



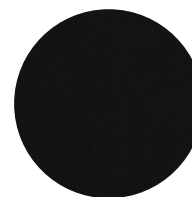
Avelina 9190



Avelina 9192



Avelina 9220



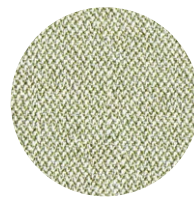
Avelina 7006



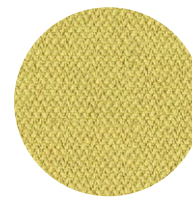
Avelina 9392

Era

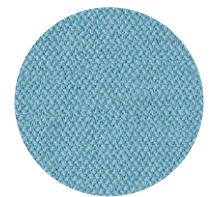
Category	02
Composition	100% Polyester Non metallic dyestuffs
Weight	320 g/m ² ±5%
Abrasion Resistance	≥100,000 Martindale
Flammability	EN 1021 - 1 Cigarette EN 1021 - 2 Match BS 7176 Low Hazard EN 13501-1 Adhered Class B, s1, d0 EN 13501-1 Un-adhered Class C, s1, d0
Light Fastness	5 (ISO 105 - B02)
Fastness to Rubbing	Wet: 4 Dry: 4 (ISO 105 - X12)



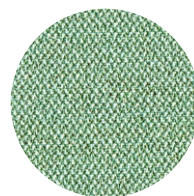
Era CSE 33



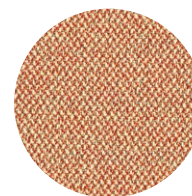
Era CSE 03



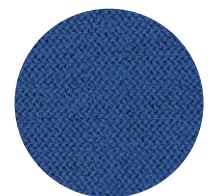
Era CSE 20



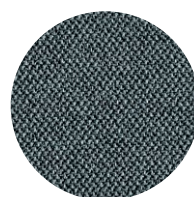
Era CSE 36



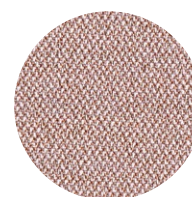
Era CSE 25



Era CSE 12



Era CSE 44



Era CSE 24

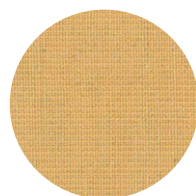


Era CSE 02

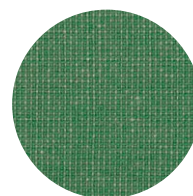
Upholstery

Patina

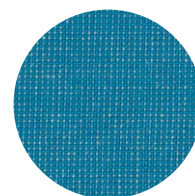
Category	02
Composition	69% Wool, 22% Flax, 8% Polyamide, 1% Viscose Non metallic dyestuffs
Weight	330 g/m ² ±5%
Abrasion Resistance	≥100,000 Martindale
Flammability	EN 1021 – 1 (cigarette) EN 1021 – 2 (match) BS 7176 Low Hazard BS 5852 Ignition Source 5 BS 7176 Medium Hazard ÖNORM B 3825 & A 3800-1 (58 kg/m ³ CMHR Foam) UNI 9175 Classe 1 IM BS 5867-2: Type B Curtains & Drapes
Light Fastness	5 (ISO 105 – B02)
Fastness to Rubbing	Wet: 3 Dry: 4 (ISO 105 – X12)



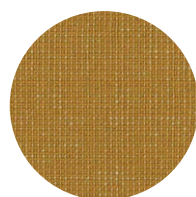
Patina PAT 16



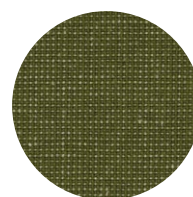
Patina PAT 28



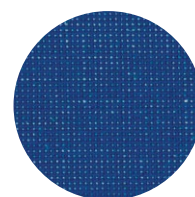
Patina PAT 31



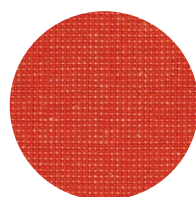
Patina PAT 11



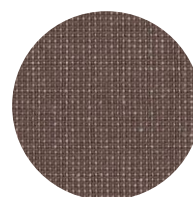
Patina PAT 37



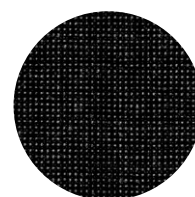
Patina PAT 23



Patina PAT 09



Patina PAT 30



Patina PAT 35



The purpose of this promotional material is to provide the necessary information. We kindly ask you to take into consideration that the on-screen images may differ from the actual color varieties, textures and structures of the material.

FAGUS

Head Office

Goce Delcev 81,
2000 Stip
North Macedonia

Factory

Industriska bb,
2326 Pehcevo
North Macedonia

Phone

+ 389 32 38 60 70
+ 389 70 21 09 70

Email

office@fagus.mk
info@fagus.mk

www.fagus.mk